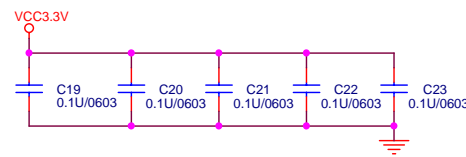
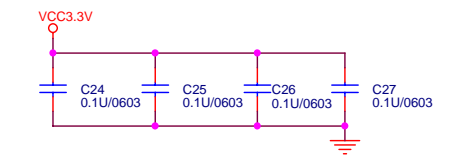


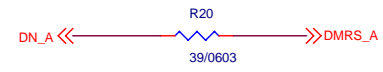
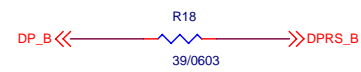
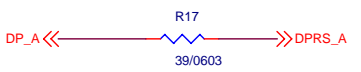
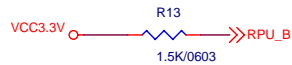
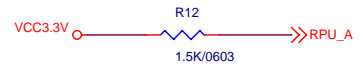
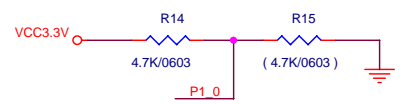
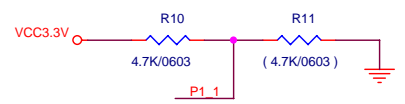
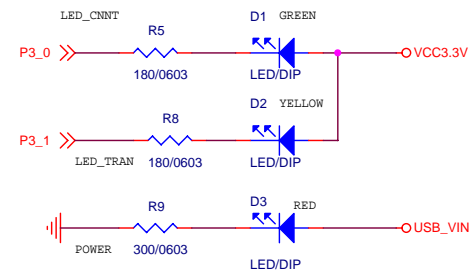
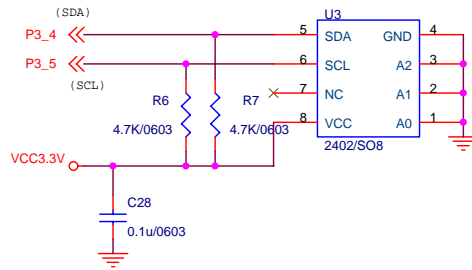
FOR U2 26 PIN



FOR U2
12, 21, 23, 25, 33, 44, 54, 56, 63 PINS



Title		
PL2501 64-PIN LQFP		
Size	Document Number	Rev
B	PL-2501 DEMO BOARD	1.3
Date:	Thursday, June 19, 2003	Sheet 1 of 2



	P1_1	P1_0
Network	Put R10	Put R15
Data Transfer	Put R10	Put R14

For B, C Version Chip

	R16, R19
B Version	15K
C Version	12.1K

- Note :
1. B version chip support select mode setting by hardware or EEPROM .
 2. EEPROM settings overrides hardware select mode.
 3. The chip's default setting is PL-2501 mode.

Title PL-2501 64-PIN LQFP		
Size B	Document Number PL-2501 DEMO BOARD	Rev 1.3
Date:	Thursday, June 19, 2003	Sheet 2 of 2